

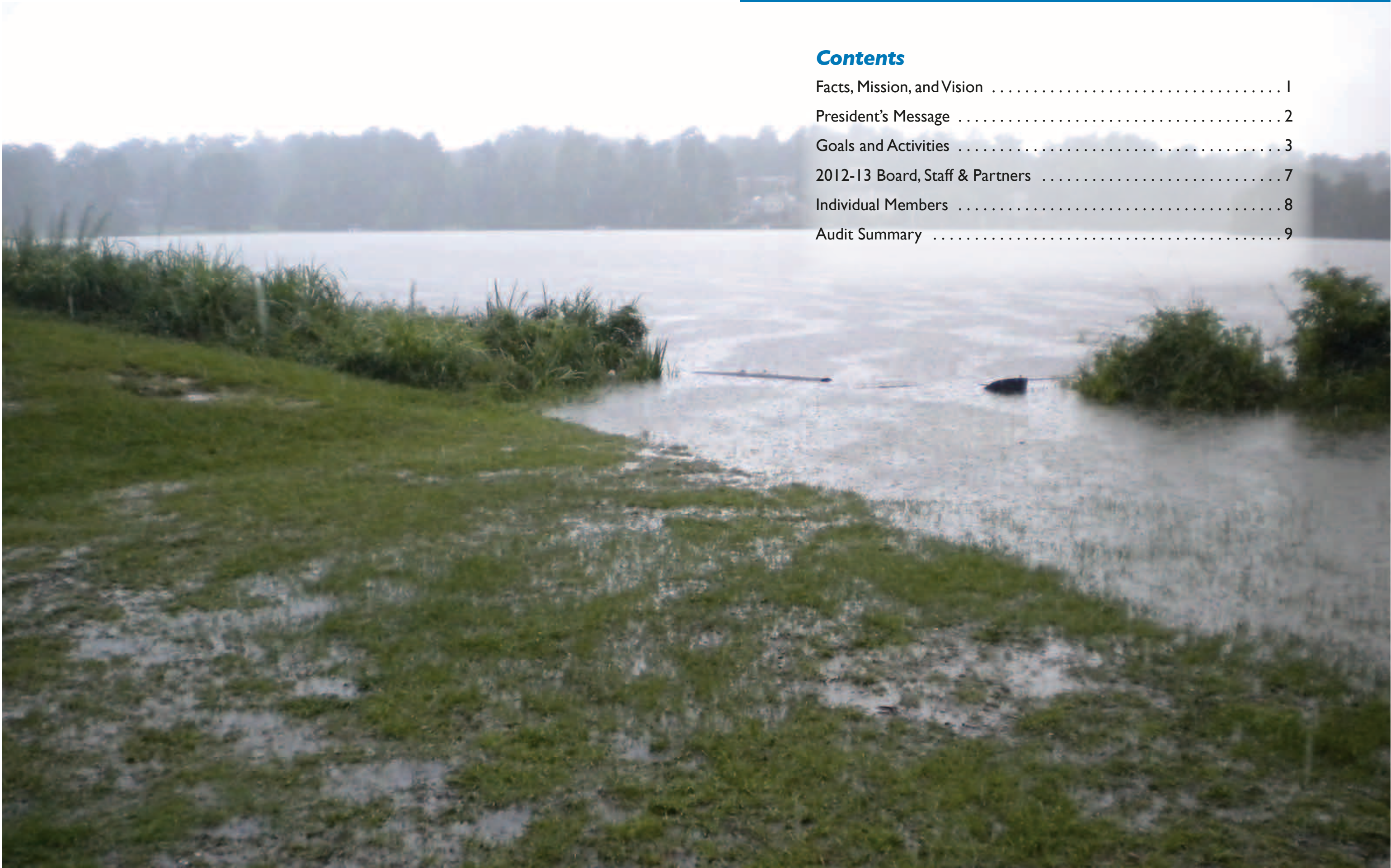


**GILLS CREEK  
WATERSHED  
ASSOCIATION**

*Uniting for Clean Water*

[www.gillscreekwatershed.org](http://www.gillscreekwatershed.org)

**2012-2013 ANNUAL REPORT**



**Contents**

Facts, Mission, and Vision ..... 1

President’s Message ..... 2

Goals and Activities ..... 3

2012-13 Board, Staff & Partners ..... 7

Individual Members ..... 8

Audit Summary ..... 9

## The Gills Creek Watershed

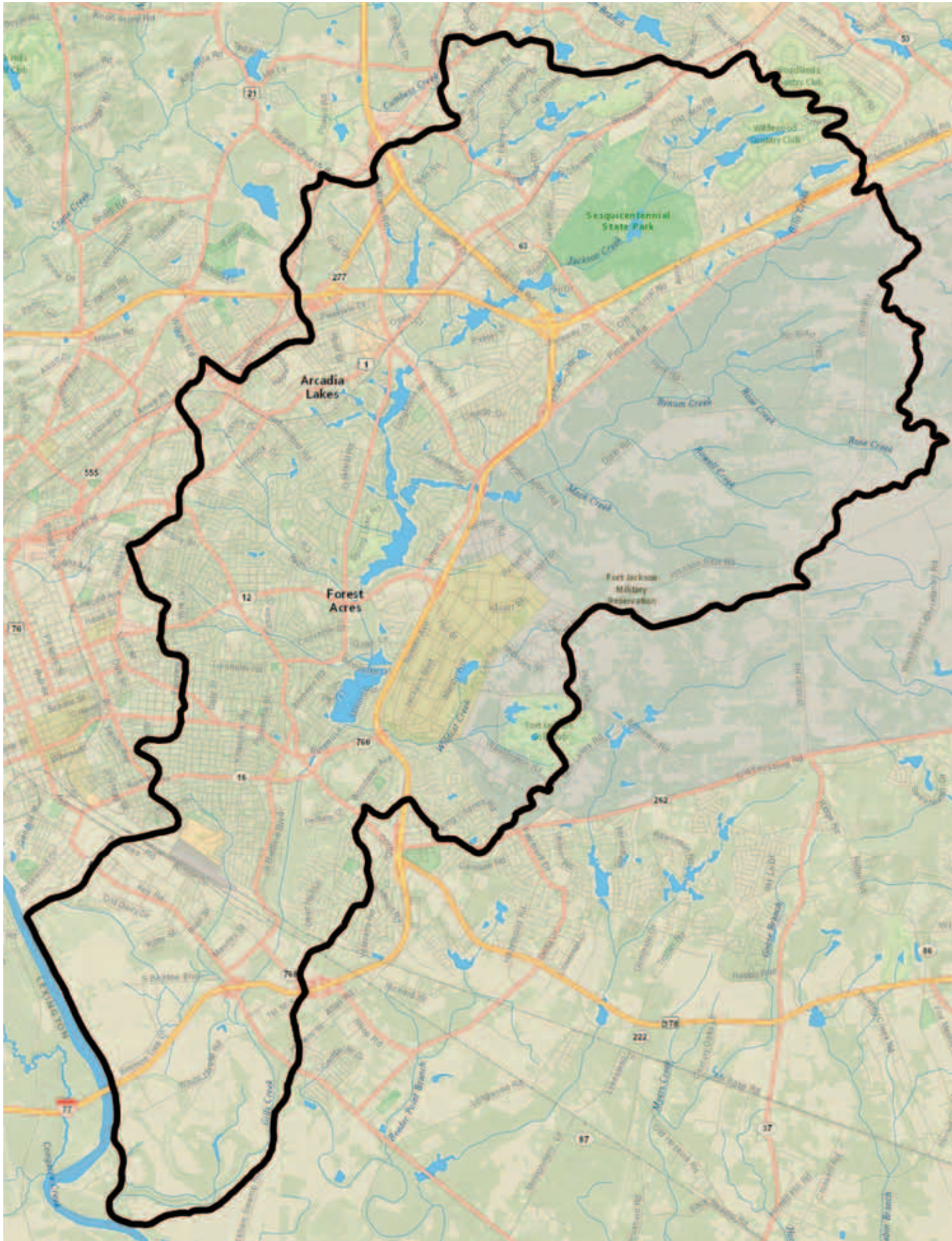
The area of the Gills Creek Watershed is 76 square miles. It contains approximately 70 miles of streams, over 47,000 acres of land, and over 100 impoundments totaling 944 acres. The primary named tributaries of the watershed are from east to west are Gills Creek, Jackson Creek and Little Jackson Creek. All three tributaries are impounded multiple times to create Centennial Lake, Springwood Lake, Windsor Lakes, and Arcadia Lakes, among others.

The headwaters of Gills Creek begin northeast of Sesquicentennial State Park at Hughes Pond and continue south through a largely undeveloped tract of Fort Jackson. Jackson Creek and Little Jackson Creek flow south through residential neighborhoods and shopping centers, joining together at Cary Lake. At Forest Lake, Gills Creek joins the other two streams, giving its name to the downstream reaches. Below Forest Lake, Eight mile Branch, Penn Branch, and Wildcat Creek feed into the main channel of Gills Creek. The final major lake in the watershed is Lake Katharine. Downstream of Lake Katherine, Gills Creek flows freely through a variety of residential, agricultural, and commercial land uses until its confluence with the Congaree River south of I-77.

Over 140,000 people reside in the Watershed which stretches across the Town of Arcadia Lakes, City of Forest Acres, the City of Columbia, Fort Jackson, and unincorporated Richland County. Each of these jurisdictions has their own land use policies, including plans for growth, zoning regulations, development standards, and sediment and erosion control regulations. A primary goal of the GCWA is to bring together the different jurisdictions in the watershed to restore and protect the watershed through implementation of the management plan, coordinated stormwater regulations, and cooperative restoration projects.

### The Gills Creek Watershed Association's Goal and Vision

In 2017 the Gills Creek Watershed is a national model for watershed management and planning. Citizens are enjoying the bike and walking trails throughout the watershed and it serves as the basis for an environmental education curriculum for Richland County Schools. All new development is carefully studied for its impact on the watershed and many of the mistakes of the past have been corrected. The stream corridors have received special attention, accommodate diverse wildlife and natural flows and capacities have been restored. Water quality is much improved and best management practices are working. An example is that there has been no net loss of pervious surfaces, in fact, there has been a measurable reduction in impervious surfaces in the past three years. Current codes reflect strong support from the public and encourage "green" development. The watershed is litter free and sedimentation in the lakes has been drastically reduced. A task force composed of governmental representatives and citizens is a model for a coordinated approach to planning, regulation and development in an environmentally sensitive area..



**PRESIDENT'S MESSAGE**

During the past fiscal year, the Gills Creek Watershed Association continued to develop its role as a non-profit advocate for watershed issues in the community. We thank our membership, over 250 strong as of June 2013, for sustaining this effort with their time, talent and treasure.

Over the 2012-13 fiscal year, the Association launched a major initiative with the Middle Watershed Master Plan, a plan for greenways, blueways and stream restoration. This project sought to identify specific projects for ecological and recreational enhancements from Kilbourne Road to Shop Road. The work was primarily funded by a grant from the Richland County Conservation Commission, with matching funds provided by our major business sponsor Edens. Over 345 volunteer hours were logged by Association members to assist a consulting team of landscape architects and engineers. Work will continue on this initiative in 2013-14 as we try to implement the Plan's recommendations with Richland County, the City of Columbia and other stakeholders.



The Association successfully collaborated with Richland County to obtain a \$183,750 grant from the SC Department of Health and Environmental Control. This grant will enhance Richland County's project to improve stormwater management at Owens Field Park. This is the largest grant yet awarded to the Association and will fund on-the-ground improvements as well as staff time for public education and outreach for the project.

Urban watersheds face myriad problems as a legacy of decades of careless development patterns and 'externalized costs.' It takes years of planning to build consensus and marshal the resources required to implement significant watershed restoration. But the notion of reclaiming our community's creeks and streams to restore their viability as healthy habitats and community resources is a compelling vision for many of us. A non-profit group like GCWA can provide important guidance and leverage to the public investment and planning required, and we give thanks to our many partners for supporting this vision so far!

Emily Freeman Jones

**Major goals of the GCWA in 2013**

- launching the Middle Watershed Master Plan
- cooperative efforts with the newly formed Rocky Branch Watershed Alliance
- reporting on the Lake Katharine sedimentation issue
- working with Richland County to review and revise the Private Pond Maintenance Policy
- increasing our membership base
- continued outreach and education

**Committee Activities**

The GCWA conducts a majority of its work through committees. Current committees and chairs include the following:

**Executive Committee** – Emily Jones, David Tuttle, Dan Tufford, Tameria Warren, Sam Agee, Elliott Powell, Julie Jones

**Education Committee** – Chair, Tameria Warren

**Membership Committee** – Chair, Julie Jones

**Financial Stewardship Committee** – Chair, David Tuttle

**Technical Committee** – Interim Chair, Lewis Kirk

**Outreach and Education Committee**

The responsibilities of the Outreach and Education Committee are to reach out to interested citizens and residents to learn about their particular water quality concerns and help them to find solutions.

*Accomplishments include:*

- Participated in eight community events and provided educational information about the watershed, major pollutants which impact water quality, and how people can become more involved.
- Spoke at 11 meetings including neighborhood and homeowner associations, civic groups, church groups, and conferences. Over 200 people attended these meetings.
- Sent monthly e-newsletters to approximately 575 people. E-newsletters include information about current and upcoming events, education on stormwater, and acknowledgment of projects and/or volunteers.





A newsletter has been sent each month of this fiscal year. The newsletters are on our website at [gillscreekwatershed.org](http://gillscreekwatershed.org).

- Eight clean-up events were conducted throughout the watershed and 203 bags of trash were removed using 1200 volunteer hours. Officially, the GCWA has adopted South Beltline Boulevard between Plowden Road and Bluff Road adjacent to Gills Creek through the Adopt-A-Highway program of Keep the Midlands Beautiful.

### Membership Committee

The responsibilities of the Membership Committee include recruiting new individual and organizational members and promoting membership renewal.

*Accomplishments include:*

- Recruitment of 250 members resulting in over \$3,800 income. Organizational members include the Cary Lake Homeowners Association and Little Lake Katharine Homeowners Association.
- The Membership Committee also planned and organized the third Wine for Water Fundraiser for GCWA in April 2013.

### Financial Stewardship Committee

The responsibilities of the Financial Stewardship Committee include advising the GCWA Board on

financial matters and reporting and seeking new and sustained sources of revenue.

*Accomplishments include:*

- Advocated for and received funding for continuation of facilitation services for GCWA
- Reviewed monthly statements for fiscal year
- Developed a fundraising plan

### Technical Committee

The responsibilities of the Technical Committee include reviewing and coordinating technical projects in the watershed, reviewing and responding to regulatory matters such as TMDLs, NPDES, and MS4 Permits, identifying potential restoration and water quality improvements, investigating citizen water quality complaints, and providing technical guidance to the Board, Executive, and Educational Committees. One valuable role of the Technical Committee is to serve



as a clearinghouse for staff and project information between our partner jurisdictions.

*Accomplishments include:*

- Reviewed the technical aspects of stormwater projects of Richland County and the City of Columbia including the Gills Creek Parkway resurfacing project, Devils Ditch project, the Little Jackson Creek project, Owens Field Airport expansion mitigation project, and Lake Katharine sediment removal project
- Investigated formal complaints/concerns from citizens regarding potential violations of stormwater regulations
- Formed the Private Pond Maintenance Policy working group to analyze and revise the County's existing policy



### Special Projects:

#### Middle Watershed Master Plan

The Gills Creek Watershed Association, through a grant from the Richland County Conservation Commission, began a project to plan a greenway and blueway, along with stream restoration in key areas, along Gills Creek from Kilbourne Road to Shop Road. A greenway in this area was recently approved in the Penny Sales Tax in Richland County. GCWA hired a consultant in 2012 to develop this plan with more detail and cost estimates.

#### Owens Field Park Stormwater BMPs and Education Project

GCWA, Richland County Conservation Commission, and Richland County Stormwater collaborated on a successful grant application to the SC Department of Health and Environmental Control's 319 Program. The grant of \$183,750 will enhance a Richland County project to install stormwater improvements at Owens Field Park. GCWA will coordinate the public education aspects of the project.

#### Cary Lake Water Quality Committee

The Cary Lake Homeowners Association formed the Water Quality Committee in response to trash and sediment entering the lake. GCWA staff and volunteers sit in on this committee and help organize volunteer cleanups at Cary Lake. GCWA also seeks grant opportunities for the Cary Lake Water Quality Committee.





## 2012-13 Board, Staff & Partners

### 2012-13 Board of Directors

Emily Freeman Jones, *President*  
 David Tuttle, *Vice President*  
 Sam Agee, *Secretary*  
 Dan Tufford, *Treasurer*  
 Elliott Powell, *Past President*  
 Lewis Kirk, *Interim Technical Committee Chair*  
 Julie Jones, *Membership Committee Chair*  
 Tamera Warren, *Education Committee Chair*  
 Thom Bristol  
 Robert Bunch

Michael Criss  
 D. Michael Kelly  
 Carol Kososki  
 Valerie Marcil  
 Pete Mayers  
 Julie Mayson  
 Mary McIntosh  
 Yancey McLeod  
 Judy Timmons

### Advisory Board Members

James B. Atkins, *Richland County*  
 Mary Caflisch, *Carolina Clear, Clemson University Extension Services*  
 Quinton Epps, *Richland Count Stormwater Division*  
 Victoria Kramer, *City of Columbia Engineering Department*  
 Tracy Mitchell, *City of Columbia Stormwater Manager*  
 Jim Manning, *Richland County Council*  
 Anne McGovern, *SCDHEC*  
 Amy Overstreet, *USDA NRCS*  
 Carol Roberts, *SCDHEC Saluda & Catawba Watershed Manager*  
 Nancy Stone-Collum, *Richland County Conservation Commission*  
 Mullen Taylor, *McAngus Goudelock & Courie*

### Staff

Erich Miarka, *Program Coordinator*  
 Hannah Fox, *Intern*

### Partner Organizations

Richland County  
 City of Columbia  
 City of Forest Acres  
 Town of Arcadia Lakes  
 Richland County Stormwater Consortium/Carolina Clear  
 Richland County Conservation Commission  
 Keep the Midlands Beautiful

Intertape Polymer Group  
 City of Columbia Climate Protection Action Committee  
 Congaree Riverkeeper  
 Rocky Branch Watershed Alliance  
 River Network  
 American Rivers

### Sponsors

Edens  
 Delta Interests, LLC (Tommy Thomason)  
 The Reynolds Family

*Sponsorship is available at four levels: Champion (\$5000+), Leadership (\$1000), Sponsor (\$500), and Friend (\$250).*

**Organizational Members**

- Cary Lake HOA (46)
- Lake Katharine HOA (86)
- Little Lake Katharine (18)
- Spring Lake HOA (40)

*The Gills Creek Watershed Association offers homeowners associations and other organizations in the watershed the option to join for all their members. Organizational members join as a single entity using organizational funds. All members of the organization receive full benefits of membership in the GCWA.*

**Individual Members**

- |                           |                                    |
|---------------------------|------------------------------------|
| Matt and Rebecca Agee     | David and Emily Freeman Jones      |
| Sam and Liz Agee          | Kathleen Jones                     |
| Jessica Artz              | Martha Jones                       |
| Larry Bates               | Rebecca Jones                      |
| Mark Binkley              | Mike Kelly                         |
| Annette Boette            | Lewis Kirk                         |
| Barbara Bowers            | Jesse Koch                         |
| Franklin and Becky Buie   | Samuel J. Kopack, Jr.              |
| Robert Bunch              | Carol Kososki                      |
| Sanford Bush              | Carol Krebs                        |
| Mary Cafilisch            | Cary Lafaye                        |
| H. Burton Case, Jr        | Tim Lemoine                        |
| Natalie Cauffman          | Mary Letts                         |
| Thomas Coleman            | Kathryn Long                       |
| Frank Cox                 | Carol Lumpkin                      |
| Michael Criss             | Bill Horton and Mary Major         |
| John Mark Dean            | Jim Manning                        |
| Kirstin Dow               | Henry Nechemias and Valerie Marcil |
| Caroline Eastman          | Pete and Margaret Mayers           |
| Albert Epstein            | Carol Mayfield                     |
| Nelson Galimba            | Mark and Julie Mayson              |
| Craig and Denisa Garner   | Thomas McCartha                    |
| Bernie Gaudi              | Cornelia McGhee                    |
| Buford and Barbara Goff   | Carrie McIntosh                    |
| Sarah Goode               | David McIntosh                     |
| Alan Greene               | Mary McIntosh                      |
| Pam Greenlaw              | Judy Miarka                        |
| John and Rhonda Grego     | Noel and Linda Morphis             |
| Bob Guild                 | Joann Morton                       |
| Will Haltiwanger          | Eleanor Niestat                    |
| Jonathan and Lyssa Harvey | Paul Palmer                        |
| Ellen Helman              | Edward Poliakoff                   |
| Carolyn Hudson            | Jenny Pournelle                    |
| Jamil Ibreak              | Elliott Powell                     |
| Derek Jakes               |                                    |

- Nena Powell Rice
- Jacqueline Prueitt
- Virginia (Ginny) Rabon
- Karen Rhu
- Mark and Julie Riffle
- Mark and Deborah Robertson
- Chuck Salley
- Hank Sizemore
- Marlene Wilson and Annette Smith
- Emerson Smith
- Kathy Smith
- Richard and Pern Smoak
- Steve Stancyk
- Dale Stigamier
- Kenneth Styer
- Melinda Suddes
- Paul Suddes
- Thomas Thomason
- Elinor Thompson
- Judy and Thad Timmons
- Dan Tufford
- Sandra Van Hout
- Mark Van Popering
- Carl Voges
- Mark Watson II
- Sammy Watts
- Mitchell Wells
- Paul White
- David Whiteman
- Dee Dee Williams
- James Williams
- Rhett and Glenda Wolfe
- Michael Tkacik and Ann Yancey

**HAMILTON, MCKINNEY & MOSS**

CERTIFIED PUBLIC ACCOUNTANTS  
A PARTNERSHIP OF PROFESSIONAL ASSOCIATIONS

**INDEPENDENT AUDITORS' REPORT**

The Board of Directors  
Gills Creek Watershed Association  
Columbia, South Carolina

**Scope**

We have audited the accompanying financial statements of the Gills Creek Watershed Association (a non-profit organization) which comprise the statement of financial position as of June 30, 2013, and the related statements of activities and cash flows for the year then ended, and the related notes to the financial statements.

**Management's Responsibility for the Financial Statements**

Management is responsible for the preparation and fair presentation of these financial statements in accordance with accounting principles generally accepted in the United States of America; this includes the design, implementation, and maintenance of internal control relevant to the preparation and fair presentation of financial statements that are free from material misstatement, whether due to fraud or error.

**Auditor's Responsibility**

Our responsibility is to express an opinion on these financial statements based on our audit. We conducted our audit in accordance with auditing standards generally accepted in the United States of America. Those standards require that we plan and perform the audit to obtain reasonable assurance about whether the financial statements are free from material misstatement.

Phone: 803.787.1509      Email: [cmoss@mosstax.com](mailto:cmoss@mosstax.com)      Fax: 803.787.1782

#5 Calendar Ct. Suite 201-C Columbia, SC 29206

Members: American Institute of Certified Public Accountants and SC Association of CPAs

# HAMILTON, MCKINNEY & MOSS

CERTIFIED PUBLIC ACCOUNTANTS  
A PARTNERSHIP OF PROFESSIONAL ASSOCIATIONS

**Auditor's Responsibility (continued)**

An audit involves performing procedures to obtain audit evidence about the amounts and disclosures in the financial statements. The procedures selected depend on the auditor's judgment, including the assessment of the risks of material misstatement of the financial statements, whether due to fraud or error. In making those risk assessments, the auditor considers internal control relevant to the entity's preparation and fair presentation of the financial statements in order to design audit procedures that are appropriate in the circumstances, but not for the purpose of expressing an opinion on the effectiveness of the entity's internal control. Accordingly, we express no such opinion. An audit also includes evaluating the appropriateness of accounting policies used and the reasonableness of significant accounting estimates made by management, as well as evaluating the overall presentation of the financial statements.

We believe that the audit evidence we have obtained is sufficient and appropriate to provide a basis for our audit opinion.

**Opinion**

In our opinion, the financial statements referred to above present fairly, in all material respects, the financial position of the Gills Creek Watershed Association as of June 30, 2013, and the changes in its net assets and its cash flows for the year then ended in accordance with accounting principles generally accepted in the United States of America.

HAMILTON, MCKINNEY & MOSS  
COLUMBIA, SOUTH CAROLINA  
SEPTEMBER 18, 2013

## GILLS CREEK WATERSHED ASSOCIATION

### STATEMENT OF FINANCIAL POSITION

JUNE 30, 2013

**ASSETS**

**Current Assets**

Cash and cash equivalents	\$ 23,625
Accounts receivable	30,616
Prepaid insurance	1,635
<b>Total Current Assets</b>	<u>55,876</u>

<b>Property, Plant and Equipment, net - Note B</b>	<u>192</u>
--	------------

<b>Total Assets</b>	<u><u>56,068</u></u>
---------------------	----------------------

**LIABILITIES AND NET ASSETS**

**Current Liabilities**

Accounts payable	6,275
<b>Total Current Liabilities</b>	<u>6,275</u>

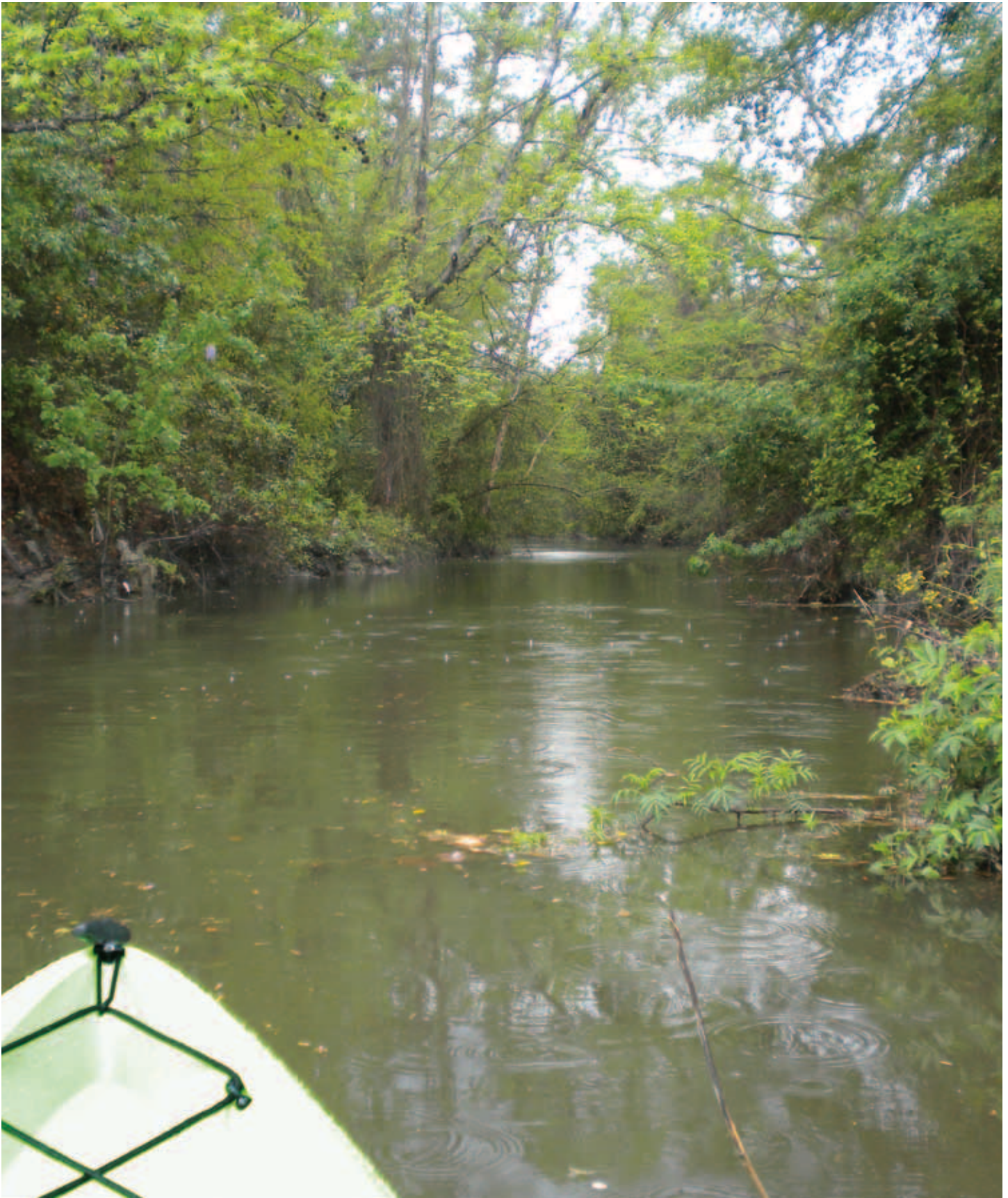
**Net Assets**

Unrestricted	39,350
Temporarily restricted	10,443
Permanently restricted	-
<b>Total Net Assets</b>	<u>49,793</u>

<b>Total Liabilities and Net Assets</b>	<u><u>\$ 56,068</u></u>
---	-------------------------

The accompanying notes are an integral part of these financial statements.





## The Gills Creek Watershed Association

Byrnes Building 430C (office), 712 Main St, EWS 603 (mail), Columbia, SC 29208, 803-727-8326

[www.gillscreekwatershed.org](http://www.gillscreekwatershed.org)