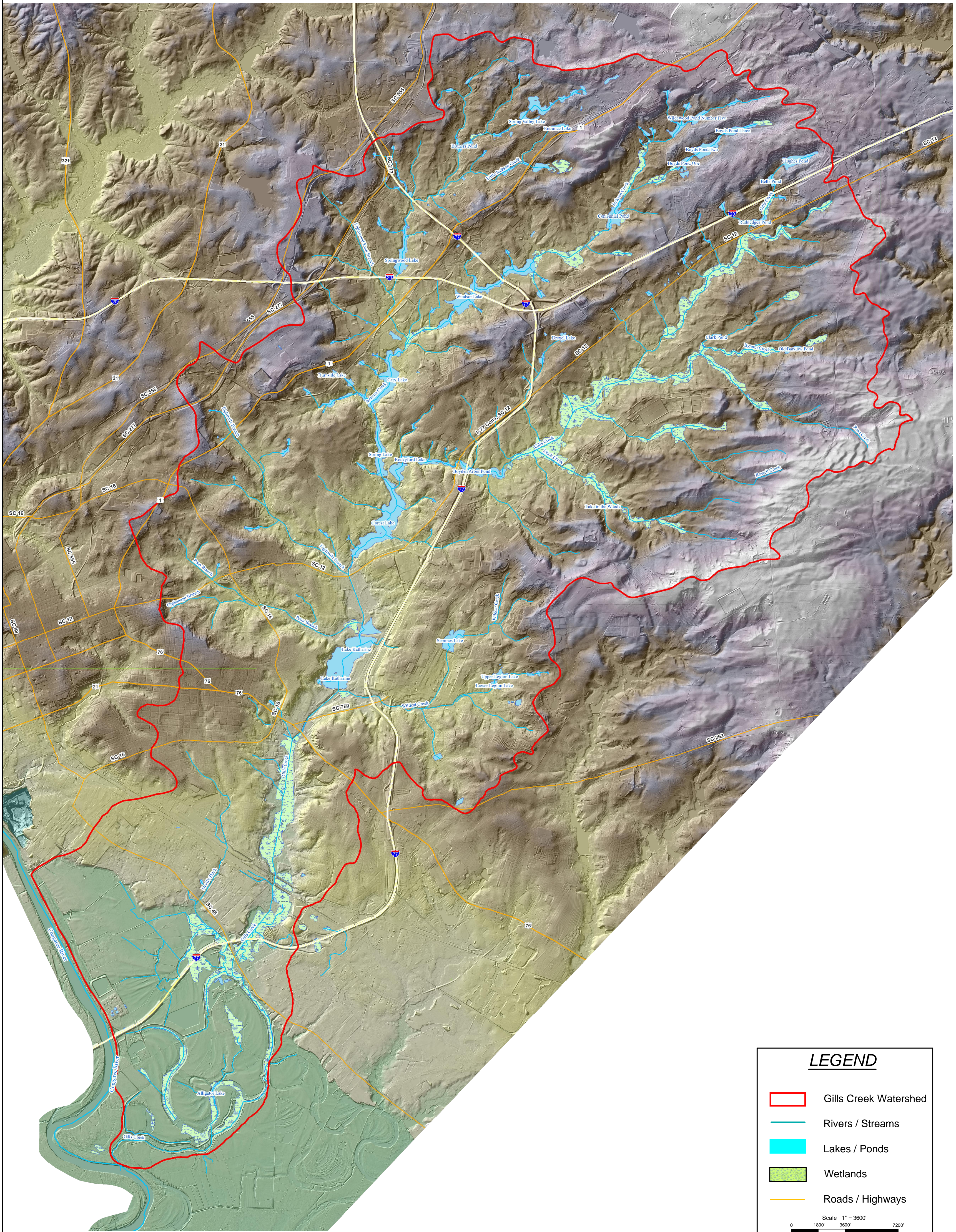


Gills Creek Watershed, Richland County, SC

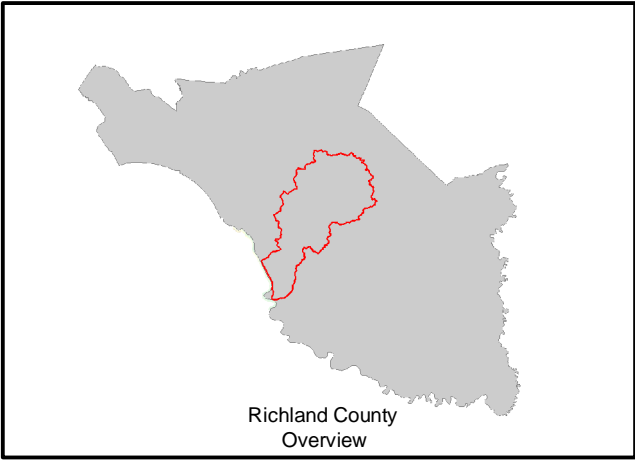


LEGEND

- Gills Creek Watershed
- Rivers / Streams
- Lakes / Ponds
- Wetlands
- Roads / Highways

Scale 1" = 3600'

0 1800 3600 7200'



Map produced by Fuss & O'Neill, Inc. for the Gills Creek Watershed Association and the Richland County Conservation Commission. Data depicted here is presented as is and was attained through cooperation from the Gills Creek Watershed Association, the Richland County Conservation Commission and the Richland County Geographic Information Systems as well as other agencies, i.e. South Carolina Department of Natural Resources. Fuss & O'Neill, the Gills Creek Watershed Association, the Richland County Conservation Commission and the Richland County Geographic Information Systems expressly disclaims responsibility for damages or liability that may arise from the use of this map.

Any resale, reproduction, or reuse of this information for commercial purposes is prohibited, except with the approval of the Gills Creek Watershed Association or the Richland County Conservation Commission.

Print Date: June 11, 2012

